

# HIGH PERFORMANCE CLOSED-BACK CEILING SPEAKER



The ATEİS Audio CCS6 and CCS6T are designed for high-end audio installations where full impact bass output along with high sound pressure levels are imperative. Low profile ceiling installation, with high power output, makes this range of ATEİS speakers the choice for many applications and requirements. The housing of the speaker complies with BS 5839 - Part 8 standards and requirements, and the speaker can also be utilized for high fidelity sound requirements.

The speaker is equipped with high fidelity 6" long throw weatherized low frequency driver, along with 1" tweeter mounted on the axis for single point of sound projection — thus providing high quality of sound over the same axis. Designed for both 100V and 70V application, via a 60 Watt rotary selector switch, this unit is the choice when it comes to aesthetic appearance and ease of installation, combined with profound sound quality.

## APPLICATION

The CCS6 is an excellent choice for any type of background music application and equally many foreground music applications. Upscale restaurants, sports clubs, hotels, malls and any other location where high-quality audio is desired will find the CCS6 to be a very attractive choice. With its low profile it is also a great choice for boardrooms and other venues where high quality sound is imperative, but the visual aspects of the speaker are equally important.

## PHYSICAL CONSTRUCTION

The CCS6 and CCS6T are excellent choices for many applications where high fidelity music and audio output are paramount.

The speaker component is situated in a sealed metal back-box with a UL Plenum compliant wire connection at the rear of the back-box.

Installer-friendly, Phoenix style terminal blocks quickly and easily connect to the speaker and also offers a pass-through connection for continuing the line to other speakers in the system. The unit uses a 6" long throw low frequency driver along with a 1" tweeter mounted on axis for single point sound output.

A bass port on the front of the baffle serves to further extend the low frequencies of this speaker. Transformer selection is completed via a screw-

driver adjustable dial on the front of the baffle, which is easily accessible by removing the grille. With a maximum 60 Watts transformer tap selection this speaker offers unique sonic qualities along with a substantial sound pressure level.

## ACOUSTIC MODELING

The CCS6T speakers support EASE, CATT and ULYSSES models for acoustical studies. This means the acoustic models can be created to simulate the sound quality and distribution prior to installation.

As per BS5839 - Part 8, EN60849 and NFPA72 a minimum of 0.5 RaSTI is required to achieve the required intelligibility.

## APPROVALS & STANDARDS

All ATEİS loudspeakers have undergone tough testing procedures to ensure that all products can operate at their rated power in compliance with IEC60268 - Part 5.

In addition, all the fire-rated products have undergone actual fire tests to ensure compliance with BS5839 Part 8.

The CCS6 speaker package is tested in accordance with intelligibility. The "C" version complies with BS5839 part 8, and is hence fitted with ceramic terminal and thermal fuse.

## ARCHITECT & ENGINEERING SPECIFICATION

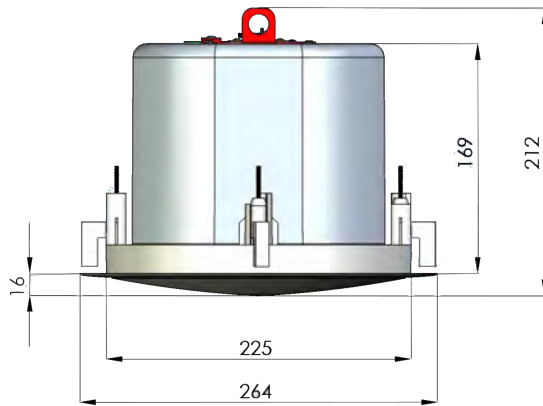
The unit shall be ATEİS Audio Model CCS6 or approved equal.

Assembly shall be comprised of a coaxial 6" loudspeaker with 3.5kg magnet and a 1" titanium tweeter with a 1/2" moving coil and neodymium magnet. It shall also have a pre-mounted dual wattage transformer in a sealed enclosure with UL Plenum-compliant wire terminations.

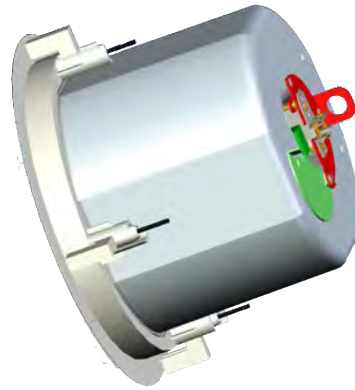
Baffle shall be round with inner mesh grille. Installation shall be by quick connect flip-out and tighten connectors. Loudspeaker shall have a 160° dispersion pattern and a smooth frequency response ranging from 20 kHz as per BSEN60268-5.

Sensitivity shall be a minimum of 88dB @ 1 watt, 1 meter. Transformer shall be pre-mounted with wattage selection of 60, 30, 15, 7.5 Watts. Tap selection shall be done via screwdriver adjustable dial on the front of the baffle assembly.

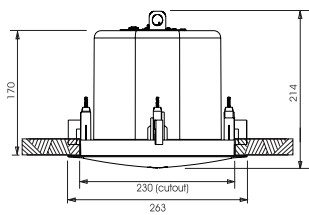
## 3D SIDE VIEW



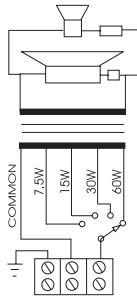
## 3D VIEW



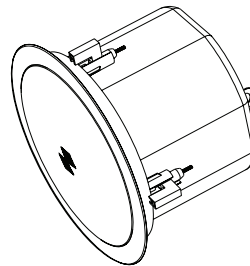
## Side View



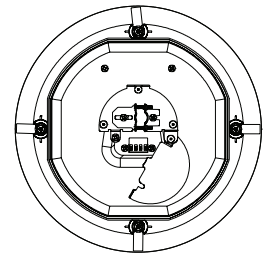
## Circuit Diagram



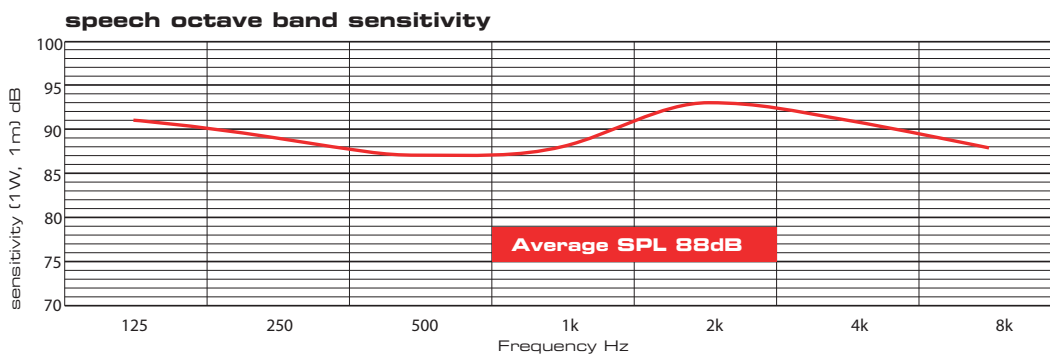
## Circuit Diagram



## Circuit Diagram



## Frequency Response



## Technical Specification

Rated power, Watts	60
Tapping 100 volt line, Watts	60/30/15/7.5
Transformer Impedance, Ohms, 100V	167/333/666/1.32k
Tappings 70.7 volt line, Watts	30/15/7.5/3.75
Driver impedance, Ohms	16
Effective frequency range, Hz (BSEN60268-5)	70-20,000
S.P.L. @ 1m, 1 watt, dB, Test Signal Bandwidth 100Hz-10kHz	88
S.P.L. @ Full power Octave Bandwidth, dB	104
Acoustic Power (dB-PWL@1 watt) 1k/2k Hz	88 / 93
Dispersion at 1k/2k Hz, Degrees	180 / 160
Directivity Axial Q factor, 1k/2k Hz	2.3 / 6.9
Dimensions front and depth, mm	263 x 214
Net weight, Kgs	3.5
Colour/Finish	White
Material	Plastic Baffle ABS with UV Inhibitors
Mounting	Rotary Compression Clamp
Cut-out, mm	Ø230